

AlGaInP Visible Laser Diode

ADL-66Z01HU

6-2D-LD66-008_Rev.00

★660nm 100mW 50°C

Reliable High Power Operation

• Features

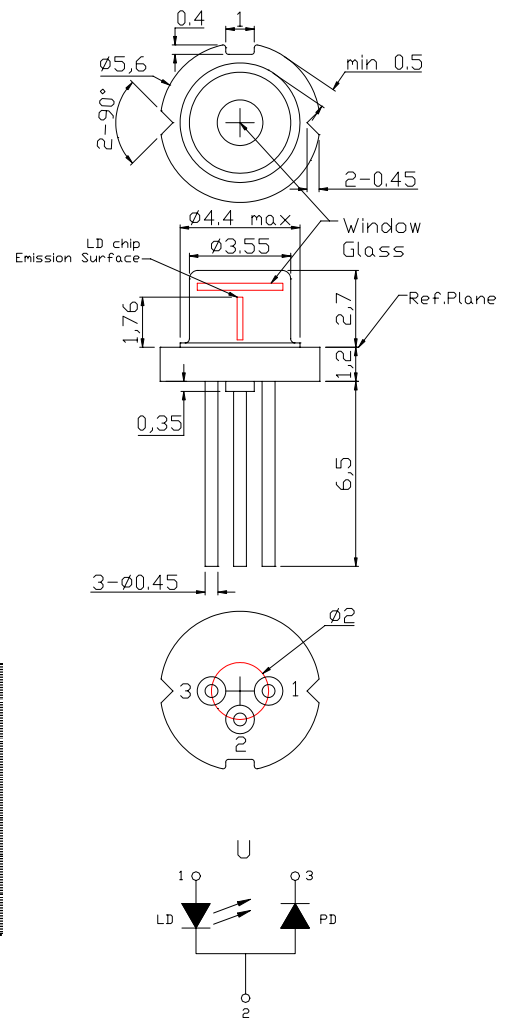
1. Highly reliable / COD free
2. Higher power
3. Monitor PD included

• Applications

1. High power Laser modules
2. Industrial laser markers / measuring instruments
3. Medical applications

• Absolute maximum ratings

Parameter	Symbol	Condition	Rating	Unit
Light output power	P_O	CW	110	mW
Reverse voltage (LD)	V_{RL}	-	2	V
Reverse voltage (PD)	V_{RD}	-	30	V
Forward current (PD)	I_{FD}	-	10	mA
Case temperature	T_C	-	-10~+50	°C
Storage temperature	T_S	-	-40~+85	°C



• Electrical and optical characteristics ($T_c=25^\circ\text{C}$)

Parameter	Symbol	Min.	Typ.	Max.	Unit	Conditions
Peak wavelength	λ	654	658	662	nm	$P_o=100\text{mW}$
Threshold current	I_{th}	-	55	70	mA	$P_o=5\text{-}10\text{mW}$
Operating current	I_{op}	-	150	190	mA	$P_o=100\text{mW}$
Operating voltage	V_{op}	2.0	2.65	2.9	V	$P_o=100\text{mW}$
Differential efficiency	η	0.8	1	1.25	mW/mA	$P_o=90\text{-}100\text{mW}$
Monitor current – L type	I_m	1.0	1.5	2.0	mA	$P_o=100\text{mW}$, $V_{RD}=5\text{V}$
Parallel divergence angle	θ_{\parallel}	7	10	12	deg	
Perpendicular divergence angle	θ_{\perp}	15	17	19	deg	
Parallel FFP deviation angle	$\Delta\theta_{\parallel}$	-3	0	+3	deg	$P_o=100\text{mW}$
Perpendicular FFP deviation angle	$\Delta\theta_{\perp}$	-3	0	+3	deg	
Emission point accuracy	$\Delta x \Delta y \Delta z$	-80	0	+80	um	

• Precautions

- * Do not operate the device above maximum ratings. Doing so may cause unexpected and permanent damage to the device.
- * Take precautions to avoid electrostatic discharge and/or momentary power spikes. A change in the characteristics of the laser or premature failure may result.
- * Proper heat sinking of the device assures stability and lifetime. Always ensure that maximum operating temperatures are not exceeded.
- * Observing visible or invisible laser beams with the human eye directly, or indirectly, can cause permanent damage. Use a camera to observe the laser.
- * No laser device should be used in any application or situation where life or property is at risk in event of device failure.
- * Specifications are subject to change without notice. Ensure that you have the latest specification by contacting us prior to purchase or use of the product.

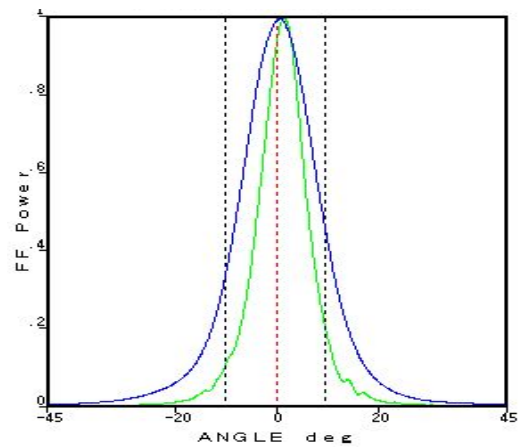
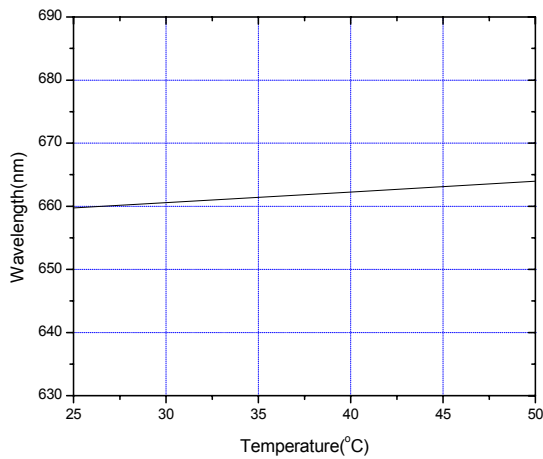
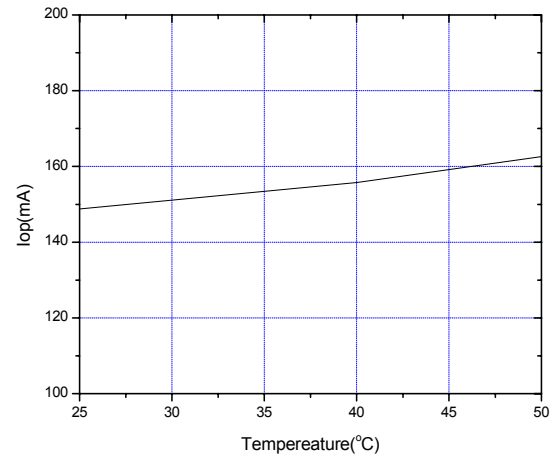
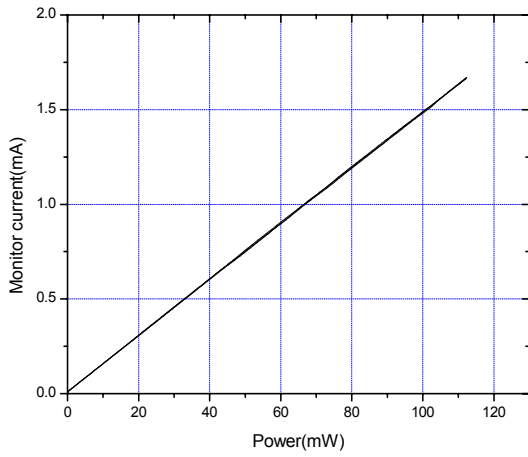
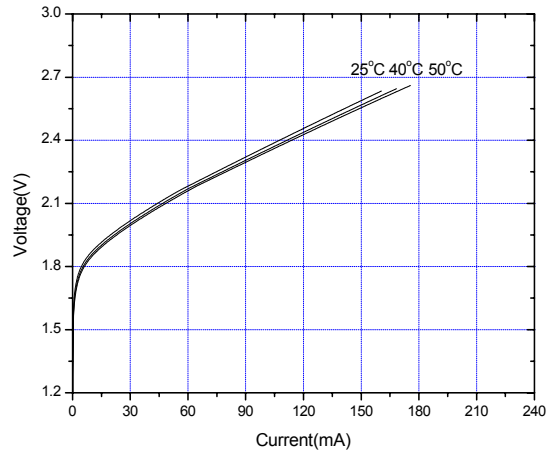
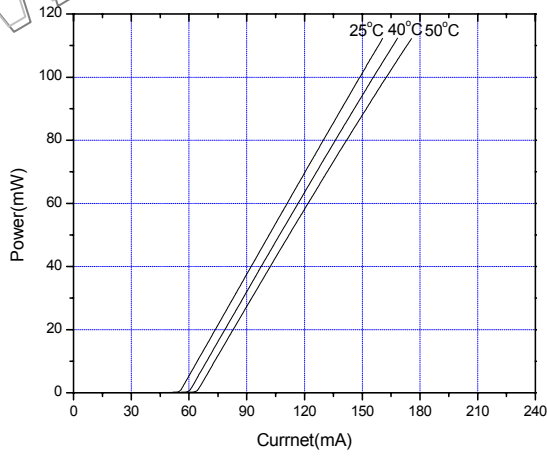
* For reference only. Contents above are subject to change without notice.

Arima
LASERS

AlGaInP Visible Laser Diode

ADL-66Z01HU

6-2D-LD66-008_Rev.00



* For reference only. Contents above are subject to change without notice.